

## PEOPLE PROGRAM NEWSLETTER

Holy Spirit Catholic Church  
6201 Stratford Place  
New Orleans, LA 70131  
(504) 394-5433

St. Matthew's Methodist  
6017 Camphor Street  
Metairie, LA 70003  
(504) 454-5900

Main  
2240 Lakeshore Drive  
New Orleans, LA 70122  
(504) 284-7678

info@peopleprogram.org

www.peopleprogram.org

---

August 23, 2010

THE ANSWER:

[www.peopleprogram.org](http://www.peopleprogram.org)

THE QUESTIONS:

Where can you find the newsletter on line?

Where can you see photos of the Spring Showcase?

Where can you see summer editions of the newsletter?

Where can you donate to People Program?

Where can you see schedules for all 3 campuses?

*We will be reducing the number of printed newsletters in the future as a part of our larger effort to become a "greener" organization.*



**HURRICANE CLOSURE**  
When the public schools in Orleans Parish close, so do we. Let's hope we don't have to do so!!

**WHERE'S PEOPLE PROGRAM?**

**EVERYWHERE!!**

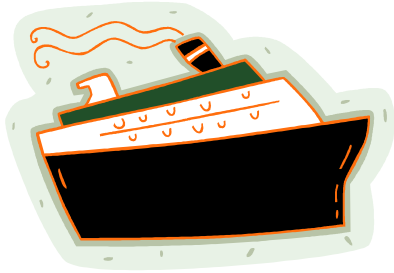
The staff is making a concerted effort, sustained by our Encore grant from the Lt. Governor's office, to increase our outreach to the community. This week we sponsored a tent at the Harrison Avenue Market, and during the summer we spoke at Edgewood Park Neighborhood Association. We will be at St. Benilde on September 14 and have open dates for other speaking engagements. Let us know if you'd like to book us as a speaker. We want everyone to know about our wonderful program

**BAKE SALE ON SEPTEMBER 9.**

**Please make plans now to make a donation and/or purchase.**



**“We kindly make you welcome.”** This Shaker greeting describes the culture we create at People Program, and it begins with the first face you see as you enter. At Holy Spirit, that is Doris Manuel; at the main campus, that is Pat Ward or Janet Bell. While their jobs consist of many more tasks—answering phones and questions, accepting and distributing mail, preparing teacher materials and classrooms, just to name a few—their main purpose is to be helpful to you. They, with staff members Jane Dassey, Delores Heglar, Laverne Kappel, and Jan Martino want you to be at home in our community. Let us know how we can better serve you.



**WE'RE CRUISING!!**

It's not too late to join us for our cruise to the Eastern Caribbean January 8-15, 2011. Check with your campus director or call Jill Wall at Vacations at Sea 504 482 1572.

**CALENDAR:**

**9/6: Labor Day holiday**

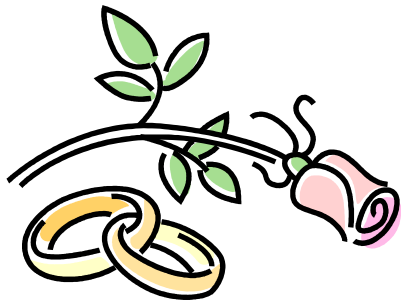
11/5-6: Fall Festival Week end

Main Campus

Wednesdays, 10:15-11:00— Blood Pressure screenings thanks to Susie Butler

West Bank

The beading guild meets at Holy Spirit on the second Saturday of the month from 1-3 PM. Contact Leona Touns for more information.



**CONGRATULATIONS!**

Sandra and Don Rowan celebrated their 50<sup>th</sup> wedding anniversary in July. Wow!



**THURSDAYS AT TWILIGHT 2010**

This popular series continues for a few more weeks at the Botanical Garden Pavilion of the Two Sisters. Food and drink are available for purchase; admission is \$8.00 for adults. Performance begins at 6 PM.

- 8/26: The N.O. Mystics
- 9/2: N.O. Moonshiners
- 9/9: Balsa Wood Flyers
- 9/16: Banu Gibson
- 9/23 Panorama Jazz Band
- 9/30: Julio & Cesar
- 10/1: John Rankin



While non sectarian, People Program is a sponsored ministry of the Congregation of St. Joseph. Please remember us in your planned giving.



**PLEASE PRAY FOR:**

- Catherine Authement
- Marilyn Turner
- Barbara May
- Elizabeth Poole

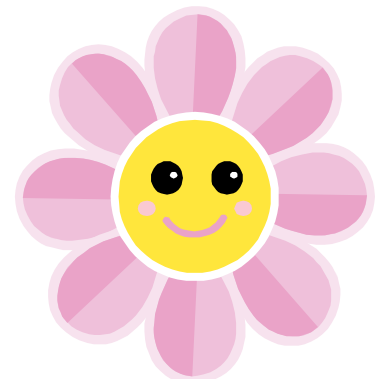
*All living things affected by the oil spill*

**IN MEMORIAM**

Robert Arnold, Nola's husband

During the summer:

- Henry Leon Bailey, Jr. ( father of Delores Heglar)
- Virgie Vicknair
- Althea Roberson, (Patti Ravain's mother)
- Alvin (Whitey) Adams
- Dan Mayer



**LOOK FOR JOKES NEXT WEEK!!**

